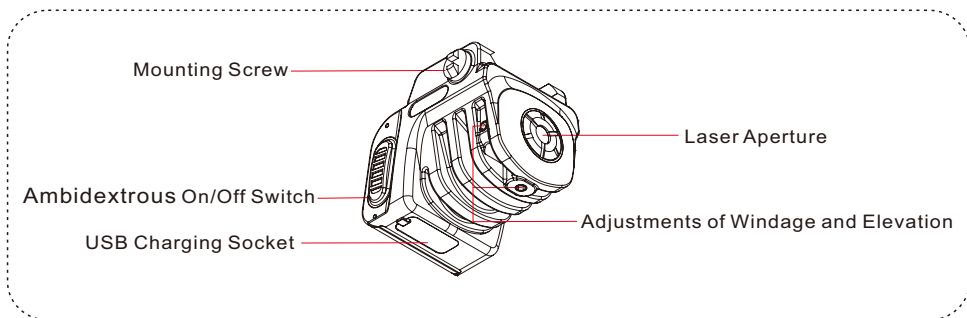


# HG-LG-8 SERIES Laser Sight

## Features

- a. Built-in battery, Micro-USB standard charging socket.
- b. Compact, lightweight and portable design.
- c. Fit for universal rail mounted pistol.

## Structure



## Model Family(s) & Specification

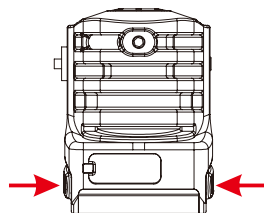
HG-LG-8 (Pistol Rechargeable Green Laser Sight)	
Green Laser	510-532nm, <5mW, Class 3A
Material	Fiber Reinforced Nylon
Dimension	42.5(L)*30.5(W)*34(H)/mm
Net Weight	40g
Battery Type	Inner Rechargeable Battery

## Delivery Sets

- Laser Sight
- Charger
- Micro-USB Cable
- Wrench
- User Manual

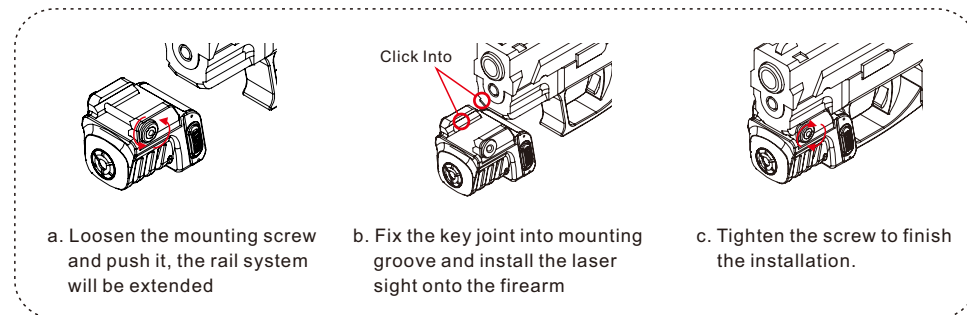
## Operating Instruction

- a. Press either side of button switch to turn on the laser.
- b. Press either side of button switch again to turn off the laser.
- c. Ambidextrous On/Off switches on both sides.

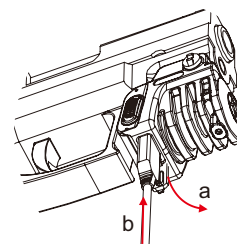


## Mounting

**WARNING:** After first checking to insure that weapon is unloaded and has no ammunition in the chamber.



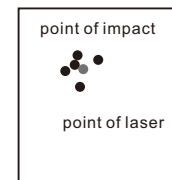
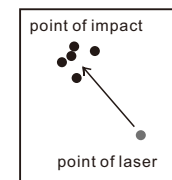
## Charging



- a. Open charging socket rubber cap.
- b. Insert the plug to charge .
- c. Please use the specified charger(voltage:5V current:500mA).
- d. Please pay attention to the charging time.
- e. please wait until the indicator light shows a full charge(the charging LED changes from red to green),and remove charger timely.

## Zero Adjustment

1. Fix the laser sight to the barrel on a weapon.
2. Place the weapon in a vise or on a shooting bench.
3. Place a target about 30m away.
4. The next step assumes that the weapon's iron sights or other sighting system is correctly zeroed for 30m. If not, turn the laser off and fire 5 rounds at the target to see the point of impact grouping. If necessary, adjust your sights to the correct point of impact.
5. Take aim again using the exact same sight picture as in step #4. Turn on the laser sight and you will see the difference in distance between the laser dot and the real point of impact. To adjust the laser to be point of impact, the windage and elevation will need to be adjusted. Rotating the windage and elevation with Allen wrench to adjust the laser.
6. Now use the laser sight, aim at the target, and shoot another group of 5 rounds. If the point of the laser is near the points of impact, then the zero adjustment has been accomplished.



## Safety Precautions

Direct viewing of the laser is hazardous to the eyes.  
 Never look directly into the laser beam.  
 Never point laser beam at person.  
 Do not allow children to use laser sight unless under adult supervision.



**Warning:** Laser beam is forbidden to shoot eyes and skin directly, blindness and burn will be caused.